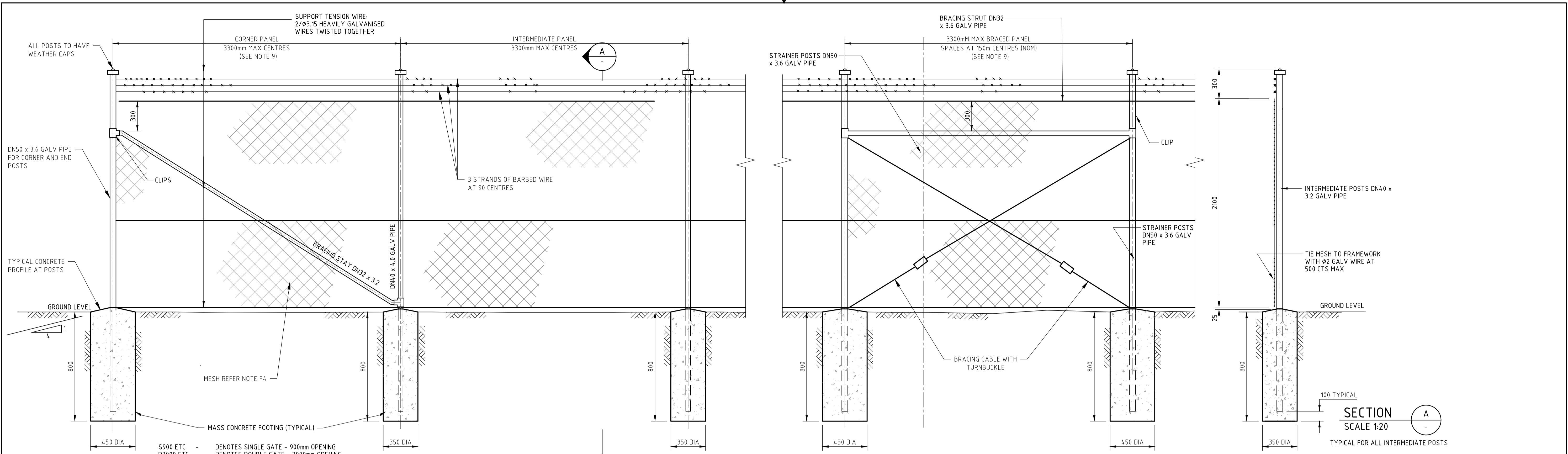


Appendix C

Design Response Details



S900 ETC - DENOTES SINGLE GATE - 900mm OPENING
 D2000 ETC - DENOTES DOUBLE GATE - 2000mm OPENING
 T.B.A. - DENOTES TO BE ADVISED DEPENDING ON SITE CONDITIONS

TABLE 1 - POST SCHEDULE			
GATE AND FOOTING TABLE			
SINGLE/DOUBLE GATE OPENING	GATE POST SIZE ('X')	MIN. SIZE OF FOOTING DIM 'D'	DIA 'W'
S900 - S1200	DN80 x 4.0	900	450
D4800 - D6000	DN150 x 5.0	1100	450

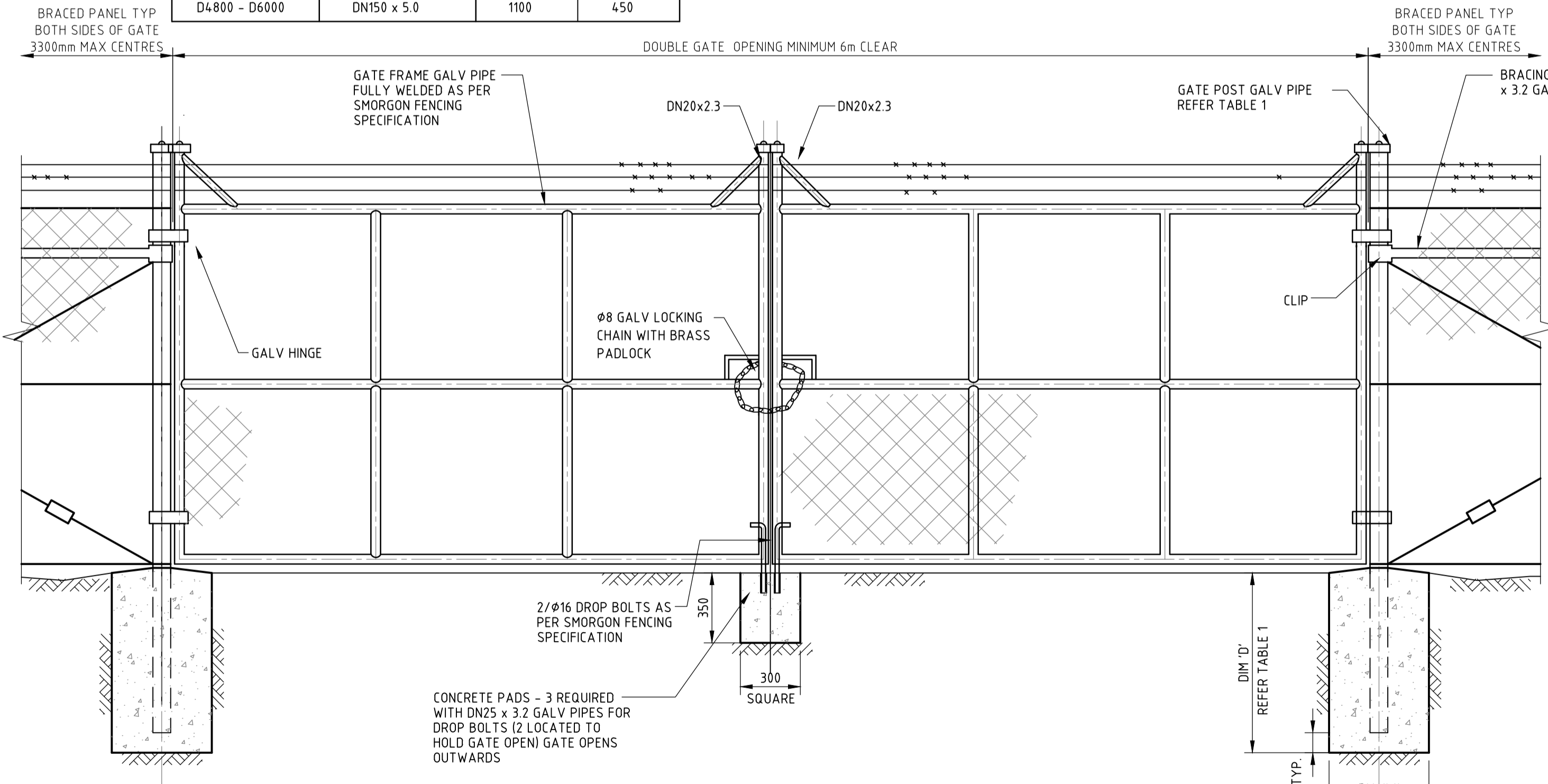
TYPICAL FENCE DETAILS
SCALE 1:20

DESIGN CRITERIA:
 IMPORTANCE LEVEL :1
 DESIGN WORKING LIFE :25 YEARS
 WIND REGION :A1

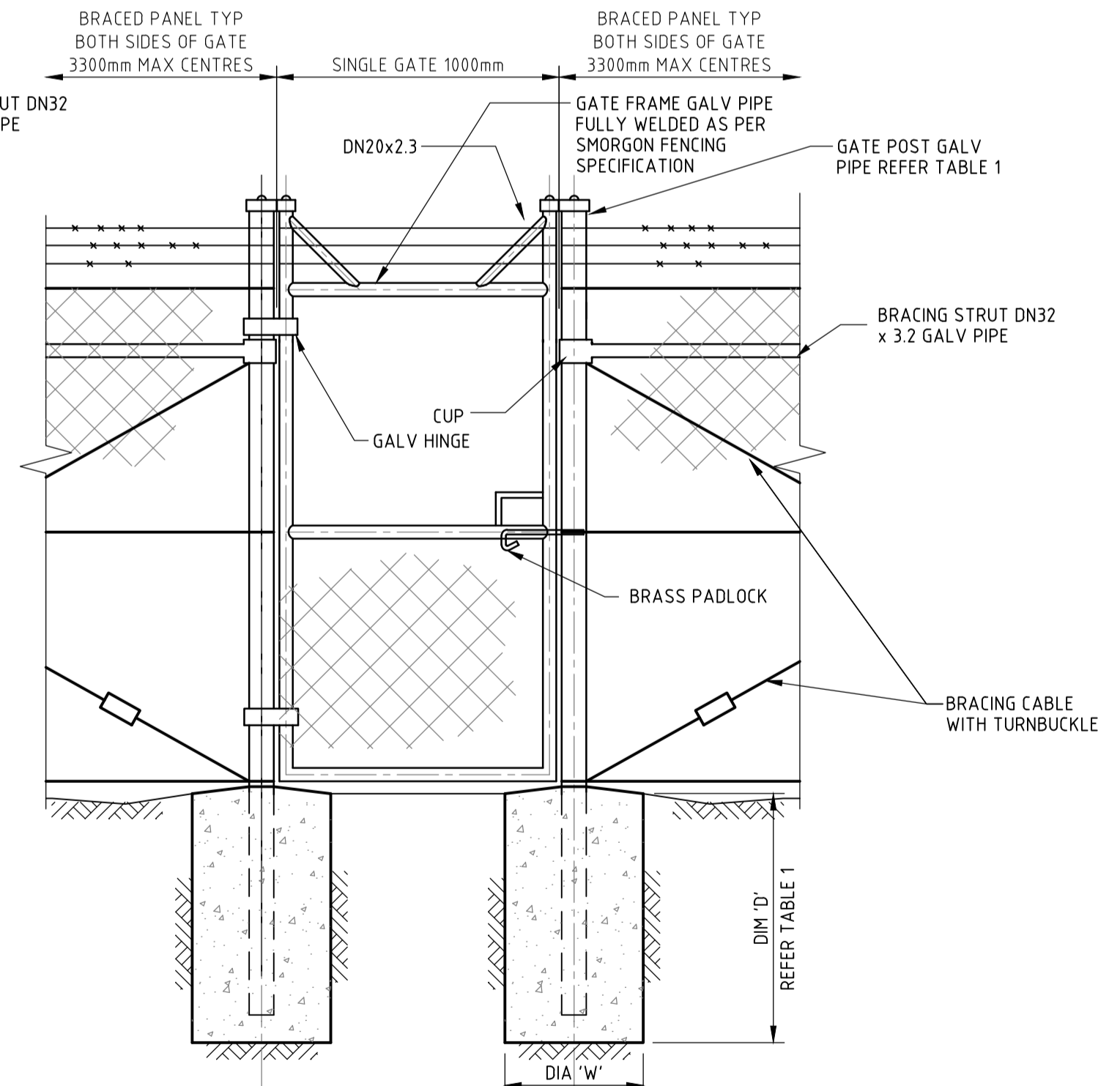
ERECTION:
 E1 SOLAR FARM PERIMETER FENCE ERRECTED AS SHOWN ON THE SOLAR FARM PERIMETER FENCE PLAN, WITH THE FINISHED SOLAR FARM PERIMETER FENCE PLUMB, TAUT AND TRUE TO LINE AND GRADES.
 E2 ALL SOLAR FARM PERIMETER FENCING ERRECTED WITH STANDARD CHAIN LINK STRETCHING EQUIPMENT.
 E3 ALL SOLAR FARM PERIMETER FENCE POST SPACING UNIFORM UNLESS SHOWN OTHERWISE ON SOLAR FARM PERIMETER FENCE PLAN.
 E4 CHAINWIRE FIXED TO ALL POSTS AND RAILS BY TWO COMPLETE TURNS OF THE WIRE, FULLY TWISTED AND ENDS LAYING FLAT. FIXING POINTS AT 200mm MAX. CENTRES.
 E5 BARBED WIRES FIXED TO SOLAR FARM PERIMETER FENCE POSTS WITH TWO TURNS OF THE WIRE.

SOLAR FARM PERIMETER FENCE MATERIAL SPECIFICATIONS:
 F1 MATERIAL - TO BE USED FOR THE MANUFACTURE OF CHAINWIRE, CABLEWIRES, TIE WIRES AND BARBED WIRE SHALL COMPLY WITH AS2423-2002 (COATED STEEL WIRE SOLAR FARM PERIMETER FENCING PRODUCTS FOR TERRESTRIAL, AQUATIC AND GENERAL USE).
 F2 POSTS AND BRACING STAYS - SHALL BE MANUFACTURED FROM HD C250 L0 PIPE GALVANISED AND SHALL COMPLY WITH AS1163 2016 (COLD FORMED STRUCTURAL STEEL HOLLOW SECTIONS) - SEE TABLE 1.0.
 F3 POST CAPS - MALLEABLE CAST IRON OR PRESSED GALV MILD STEEL.
 F4 CHAINWIRE - 50mm DIAMOND MESH 2.5mm STEEL HEAVILY GALVANISED (HG) - W102 MIN. WITH TOP AND BOTTOM SELVEDGES.
 F5 BARBED WIRE - HEAVY GALV. 1.57 HIGH TENSILE 4 POINT BARBS.
 F6 LACE AND TIE WIRE - 2mm DIA. GALVANISED STEEL WIRE.
 F7 WELD - 6mm CONTINUOUS FILLET WELD.
 F8 CONCRETE - ALL FOOTINGS SHALL BE GRADE N25 CONCRETE TO AS3600.
 F9 GATES TO BE DESIGNED TO AS1725-2016.
 F10 FITTINGS - ALL GATE FITTINGS INCLUDING CHAINS AND DROP BOLTS SHALL BE HEAVY DUTY GALVANISED.

GENERAL NOTES:
 1. FOOTING SIZES (W) AND (D) MAY BE INCREASED IN POOR OR LOOSE SOIL CONDITIONS.
 2. PROVIDE EXTENDED HEIGHT DROP BOLTS ON INSIDE OF ALL GATE LEAF; HANDLES MUST BE ACCESSIBLE THROUGH OPENING. DROP BOLTS TO BE 16 DIA. ROUND BAR GALVANISED.
 3. STANDARD SITE SIGNAGE SHALL BE SUPPLIED AND INSTALLED IN ACCORDANCE WITH AS2067.
 4. CHAINWIRE MESH TO BE FIXED TO OUTSIDE OF POST AND RAIL FRAMES USING 2mm DIA. GALV LACE AND TIE WIRE AND TENSIONED WITH APPROVED TOOL.
 5. WHERE COMPOUND PERIMETER SPECIFICS 'CRANKED' POST TOPS FOR BARB WIRE ATTACHMENT THE GATE POSTS AND GATE LEAF TOPPING MUST REMAIN VERTICAL.
 6. TEST EARTH CONTINUITY BETWEEN ALL STRUTS AND POSTS.
 7. REFER TO DWG DRW-EL-0001 FOR TOTAL LENGTH OF SECURITY SOLAR FARM PERIMETER FENCE AND DISTANCE/BEARING SETOUTS.
 8. REFER TO DRG DRW-EL-0001 FOR ACCESS GATE LOCATIONS AND TYPES.
 9. BRACED PANELS SHALL BE USED ON ALL ENDS, CORNERS AND GATE POSTS AND EVENLY SPACED WITHIN 150m ON STRAIGHT SECTIONS.



TYPICAL DOUBLE SWING GATES DETAIL - TYPE 2
SCALE 1:20



TYPICAL SINGLE SWING GATE DETAIL - TYPE 3
SCALE 1:20

1:20
0 400 800 1200 1600 2000 mm

ISSUED FOR CONSTRUCTION

DO NOT SCALE FROM DRAWING
PLEASE NOTE
 1. Drawings with the suffix "T" in the revision box are for Tender Purposes only. Downer Utilities (Downer Utilities Pty Ltd) reserves the right to amend any information on these drawings post Tender Award.
 2. The information contained herein remains the property of Downer Utilities and is to be used only in conjunction with the performance of work for Downer Utilities. Reproduction in whole or part without written permission is expressly forbidden.



REV	REVISION DESCRIPTION	DRAWN BY	APPR'D BY	CHECKED BY	DATE
0	ISSUED FOR CONSTRUCTION	RM	OD	RP	11.09.2018



CLIENT: NEOEN	
DRAWN BY: R.RIVERSON	DATE: 17.08.2018
DESIGNED BY: B.PARSI	DATE: 17.08.2018
DRG. CHECKED BY: R.MCKINLEY	DATE: 11.09.2018
DES. CHECKED BY: R.PERERA	DATE: 11.09.2018
CAD FILE No: 133010-DOWNER-DRW-ST-0101.dwg	APPROVED: O.DRANSFIELD
	DATE: 11.09.2018

PROJECT: NUMURKAH SOLAR FARM	
TITLE: SOLAR FARM PROPERTY SECURITY FENCE ELEVATION & DETAILS	
PROJECT ID: 133010	CREATING ORGANISATION: DOWNER
DRAWING No: DRW-ST-0101	REVISION: 0
SHEET SIZE: A1	

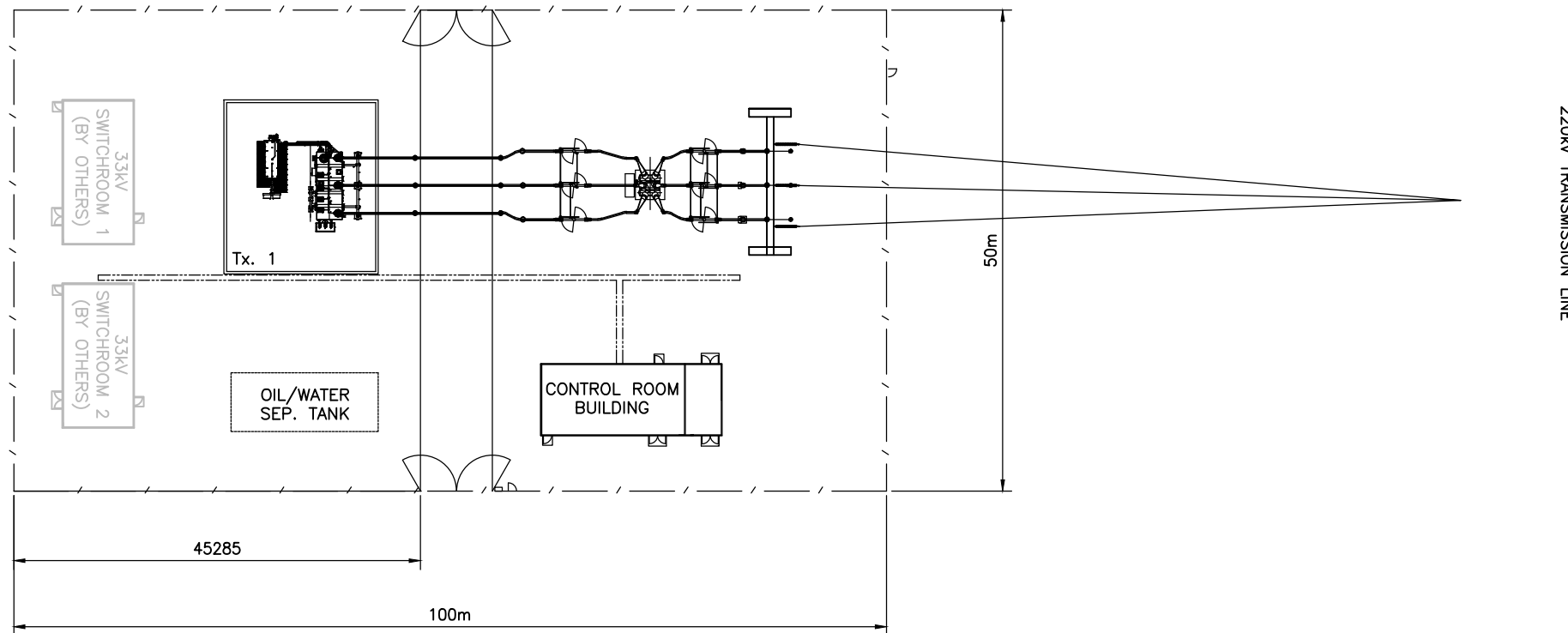
FILE P:\133010_DOWNER\133010-DOWNER-DRW-ST-0101.dwg
 PLOT DATE: 14 September, 2018 - 5:59pm

LEGEND:

ROI REMOTE OPERATED ISOLATOR
 E/SW EARTH SWITCH
 DTCB DEAD TANK CIRCUIT BREAKER
 CVT CAPACITIVE VOLTAGE TRANSFORMER
 SA SURGE ARRESTER

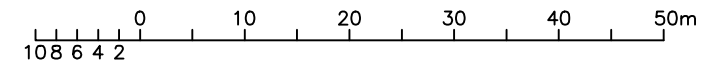
NOTES

1. THIS DRAWING IS FOR ESTIMATING PURPOSES ONLY AND IS NOT FOR CONSTRUCTION. DETAILS ARE SUBJECT TO DESIGN DEVELOPMENT.
2. DIAGRAM ONLY, NOT TO BE TAKEN AS PHYSICAL LAYOUT.



SITE PLAN
SCALE 1:500

SCALE 1:500



AusNet Services STD A2

REFERENCE DRAWINGS		REVISION					GOORAMBAT SOLAR FARM SUBSTATION				
							SITE PLAN				
							ONE Tx SUBSTATION				
DRAWING TITLE	DRAWING No.	DATE	REV	DESCRIPTION	BY	CONTRACTOR	ISSUED	Spec No.	Order No.	AusNet services No	GBSF-1Tx-PLAN A
		10.12.18	A	FOR ESTIMATING ONLY	CG	AST	ENDORSED DATE				
							ENDORSED	REV A			

4.00 X 566mm A2